



# OM METALS & ENGINEERS

AN ISO 9001 : 2008 Company

## Clean-In-Place (CIP) Unit



### Description

The Clean-In-Place (CIP) system is used in the sanitation of your process piping, tanks and equipment. It allows users to automatically control washing of equipment.

OME Clean-In-Place (CIP) Systems are engineered to your specific plant application and utility requirements for effective and efficient process equipment cleaning. Proper CIP design and sizing ensure sufficient flow and appropriate pressure to thoroughly remove residue, rinse effectively, shorten cycle times, reduce operating costs and promote worker safety.

## Options

- Skid mounting (automatic/semi-automatic)
- 1-2-3-4 tank system
- One circuit or two circuits
- Five standard volumetric sizes, (1,000, 1,500, 2,000, 3,000 and 4,000 liters)
- Three standard circulation rates, (8,000, 12,500, 20,000 LPH)

## Advantages

- OME controls are designed to optimize cycle times and reduce chemical and water use.
- Easy-to-understand Recipe Editor provides access to setpoints. Defined alarms reduce troubleshooting time.
- OME dedicated service team provides full technical support during the start-up and after installation.

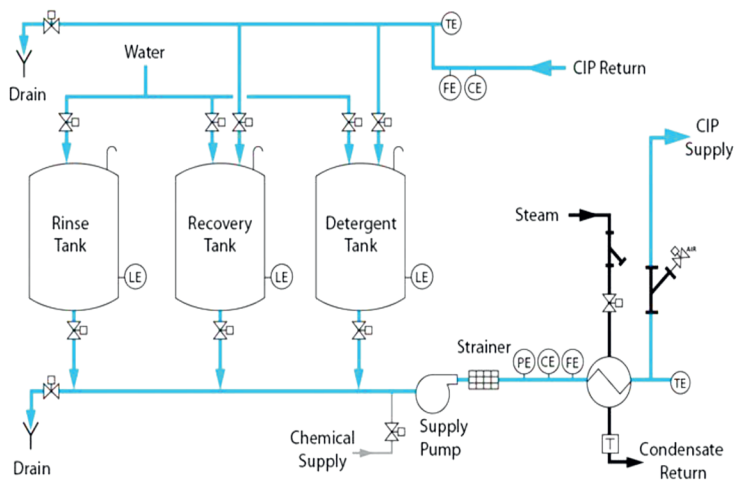
## Materials

- Stainless-steel construction. Skid is heavy-duty box tube construction with glass bead finish & sanitary adjustable ball feet.
- Tank is AISI SS316, either single jacketed or insulated.

## Integration

- CIP system are pre-wired, fully assembled, functionally tested and ready for hook-up so you have less down time. It is installed quickly, with minimal disruption to your facility.

## Multi-tank Schematic



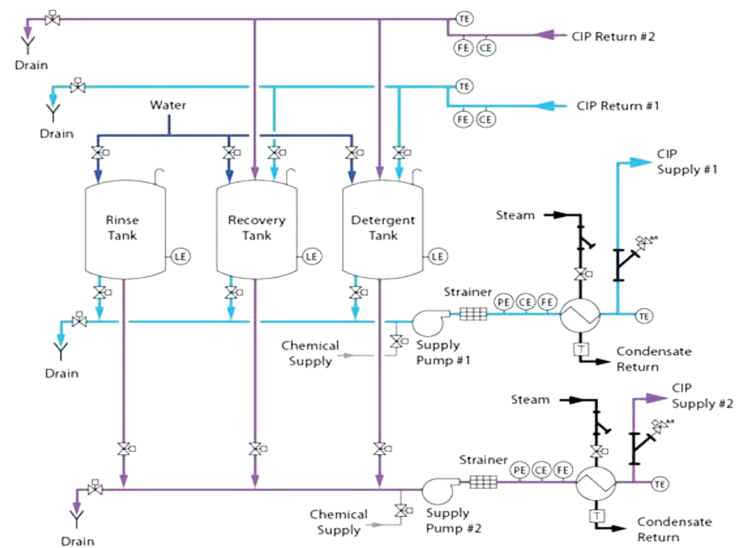
### Multi-Tank Detergent and Rinse Recovery/Reuse

- Reduces water and waste water costs.
- Permits recovery and reuse of wash solution and rinse water
- Fourth tank may be added for acid recovery and reuse applications.

## Multi-Circuit Schematic

### Multi-Circuit and Recovery/Reuse

- Centralized controls
- Substantial cost and space-saving advantages over multiple separate units
- Serves multiple circuits independently and simultaneously
- Reduced wash and rinse cycle times



## Equipment Sizing

Flow Rate	Tank Size		Supply and Return
LPH	Single Circuit	Double Circuit	O.D. Inches
8,000	1,000	2,000	1.5
12,500	1,500	3,000	2
20,000	2,000	4,000	2.5

## Contact Us

**098508 46493 | 098508 25694 | 9075008943**

Add : Sr. No. 170, Dnyaneshwar Colony, S. V. Engg. Comp., Pune - 411 035.

Our Website : [www.ommetal.co](http://www.ommetal.co)

Our Emails : [ommetalspune@gmail.com](mailto:ommetalspune@gmail.com) | [sales@ommetalsindia.in](mailto:sales@ommetalsindia.in) | [md@ommetalsindia.in](mailto:md@ommetalsindia.in)